

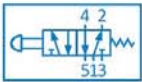
5/2 Way Push Pull Valve (Spring return / Detent)

Features

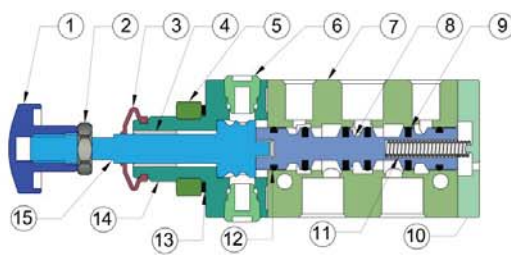
- ▶▶ Compact Design with Maximum Flow
- ▶▶ Aluminum Extruded Body with Anodized

Technical Specification

Model	2AD-PR-505	2AD-PR-507	2AD-PD-505	2AD-PD-507
Size	1/4"	1/2"	1/4"	1/2"
Type	Spring Return		Detent	
Design	Spool type			
Pressure	10 Kg/cm ²			
Temperature	5 to 55 °C			
Flow rate in SCFM Lts. / Min @6 Kg	42	123	42	123
Recommended Oil For Lubrication	ISO VG32			
Leakage	Bubble Tight			
Media	Compressed Air (Filtered & Lubricated)			
Weight (Kg)	0.250	0.700	0.250	0.700

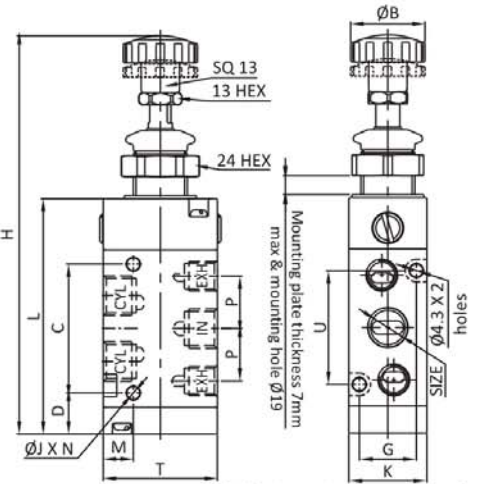


No.	Part Name	Material
1	Knob	Nylon
2	Nut	Standard Steel
3	Bellow	NBR
4	Teflon Ring	PTFE
5	Check Nut	S. S.
6	Cushioning Set	Brass / S. S.
7	Body	Aluminum
8	Spool	Aluminum
9	Seals Ring	NBR
10	End Cover	Aluminum / Nylon
11	Spring	S. S.
12	'O' Ring	NBR
13	Flat Ring	NBR
14	Top Cover	Aluminum
15	Piston Set	Standard Steel



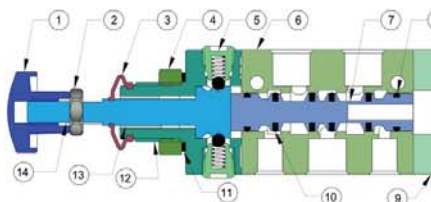
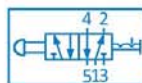
Dimensions :

MODEL	SIZE	L	H	K	G	U	T	M	C	D	P	ØJ	N	ØB
2AD-PR-505	1/4"	76	132	26	19	38	38	10	43	11	17.5	4.3	2	25
2AD-PR-507	1/2"	138	200	34	27	62	58	09	66	28	16.5	5.3	4	25



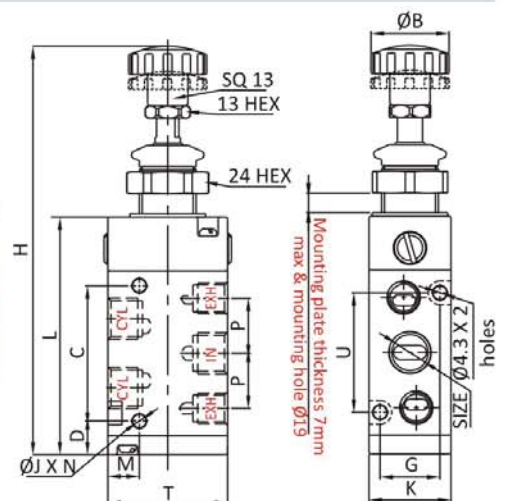
(All Dimensions are in mm)

No.	Part Name	Material
1	Knob	Nylon
2	Nut	Standard Steel
3	Bellow	NBR
4	Check Nut	S. S.
5	Cushioning Set	Brass / S. S.
6	Body	Aluminum
7	Spool	Aluminum
8	'O' Ring	NBR
9	End Cover	Aluminum / Nylon
10	Seals Ring	NBR
11	Flat Ring	NBR
12	Top Cover	Aluminum
13	Teflon Ring	PTFE
14	Piston Set	Standard Steel



Dimensions :

MODEL	SIZE	L	H	K	G	U	T	M	C	D	P	ØJ	N	ØB
2AD-PD-505	1/4"	79	135	26	19	38	38	10	43	13.7	17.5	4.3	2	25
2AD-PD-507	1/2"	138	200	34	27	62	58	9	66	28	16.5	5.3	4	25



(All Dimensions are in mm)